

Pressure controlled shut-off valves type DSV and CDSV

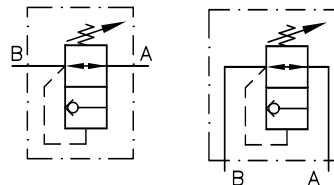
These pressure controlled shut-off valves block the flow to consumers located down stream without any leakage as soon as the adjusted pressure is achieved or exceeded in the consumer port B. The valve will open the passage again if the pressure in port A drops under the set figure. A significant advantage of the screw-in valve type CDSV is the easily to manufacture mounting hole (see dimensions). It is frequently used to safeguard pressure gauges.



Nomenclature:	Shut-off valve
Design:	Individual valve for pipe connection Individual valve, Manifold mounting Screw-in valve
Adjustability:	Tool adjustable Manually adjustable
p_{max}:	600 bar
Q_{max}:	60 lpm

Basic types and general parameters

Basic type	CDSV 1	DSV 2 and DSVP 2 ¹⁾			Symbol
Design	Screw-in valve	Version for pipe connection or manifold mounting valve			CDSV 1 DSV 2
Size	1	1	2	3	DSVP 2
Flow	10	20	40	60	
Q_{max} (lpm)					
Pressure range:	C: 120	D: 40	D: 20	D: 20	
Pressure p_{max} (bar)	B: 350 A: 600	C: 100 B: 220 A: 600	C: 60 B: 120 A: 400	C: 60 B: 120 A: 400	
Tapped ports	M 16 x 1.5	G 1/4 (BSPP)	G 3/8 (BSPP)	G 1/2 (BSPP)	



¹⁾ Manifold mounting valve only in size 1

Additional versions

- Manually adjustable pressure setting
- Type CDSV also available with connection block for pipe connection

Order examples

CDSV 1 A - 550

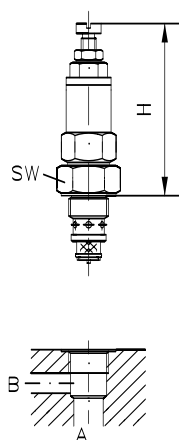
Shut-off valve (screw-in valve) type CDSV, pressure range 20 ... 600 bar (coding A), pressure factory set to 550 bar

DSV 2 - 2 BR

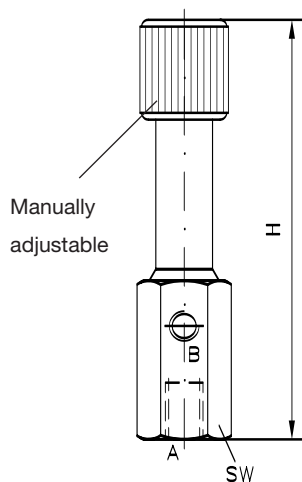
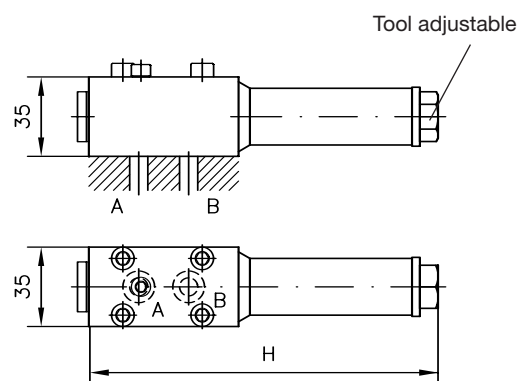
Shut-off valve (version for pipe connection), size 2, pressure range (0)...120 bar (coding B), manually adjustable pressure setting (coding R)

Dimensions**Type CDSV 1**

(see order example)

**Type DSV 2**

(see order example)

**Type DSVP 2 - 1**

All dimensions in mm, subject to change without notice!

Basic type	H_{max}	SW	m (kg)
CDSV 1	69	a/f 22	0.13
DSV 2-1	185	a/f 36	0.7
DSV 2-2	193	a/f 36	0.9
DSV 2-3	193	a/f 46	1.1
DSVP 2-1	181	–	1.1

Additional information

- Shut-off valves type DSV, DSVP D 3990
- type CDSV 1 D 7876

- See also section “Devices for special applications”
(Screw-in valves and installation kits, Devices for up to 700 bar)

For page and section of the devices additionally listed,
see type index